



Characterizing and Protecting Benthic Habitat in Greater Farallones National Marine Sanctuary

Karen Reyna and Jan Roletto

Peter Etnoyer and Guy Cochran

A partnership between National Centers for Coastal Ocean Science, Greater Farallones National Marine Sanctuary, United States Geological Survey

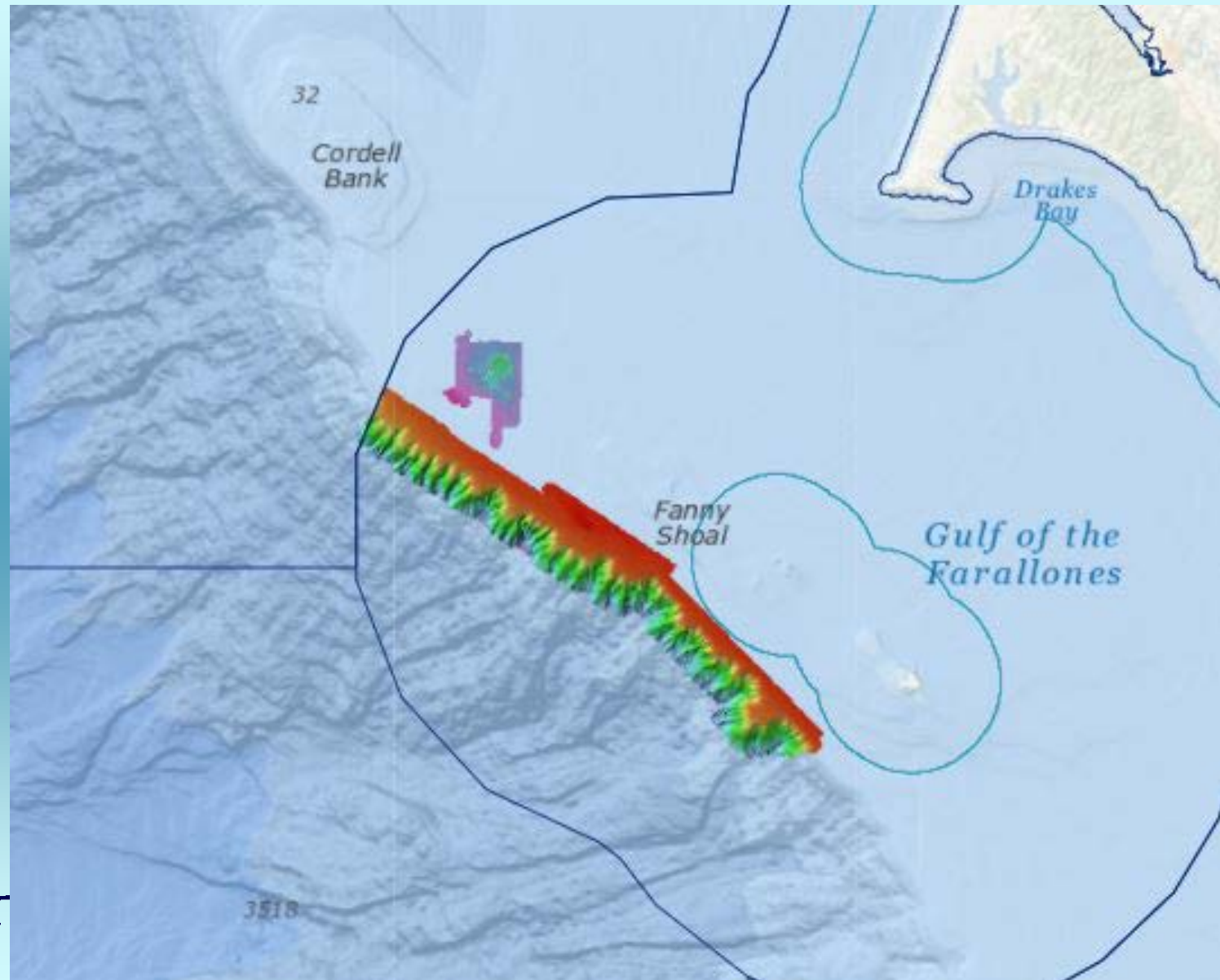


Cordell Bank National Marine Sanctuary-juvenile rockfish densely school around strawberry anemones, yellow hydroids, red algae, sponge encrusted Cordell Bank rocky reef

Research • Education • Conservation • Stewardship

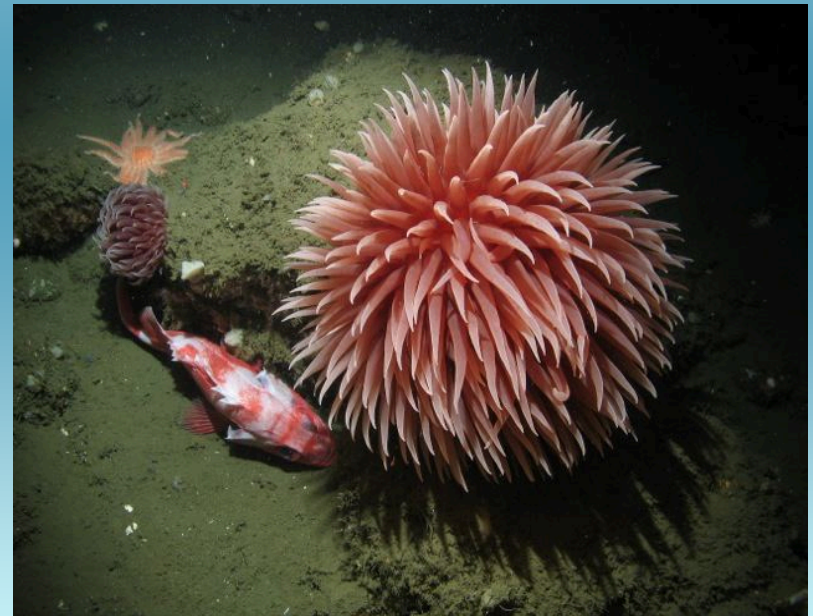
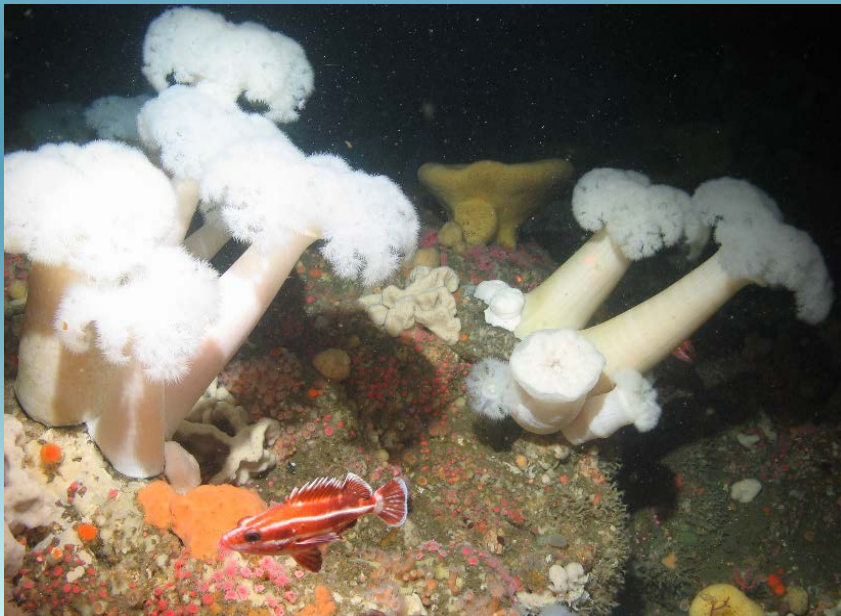


Mapping and Characterizing Areas of Interest



Essential Fish Habitat (EFH) & Pacific Council Responsibility

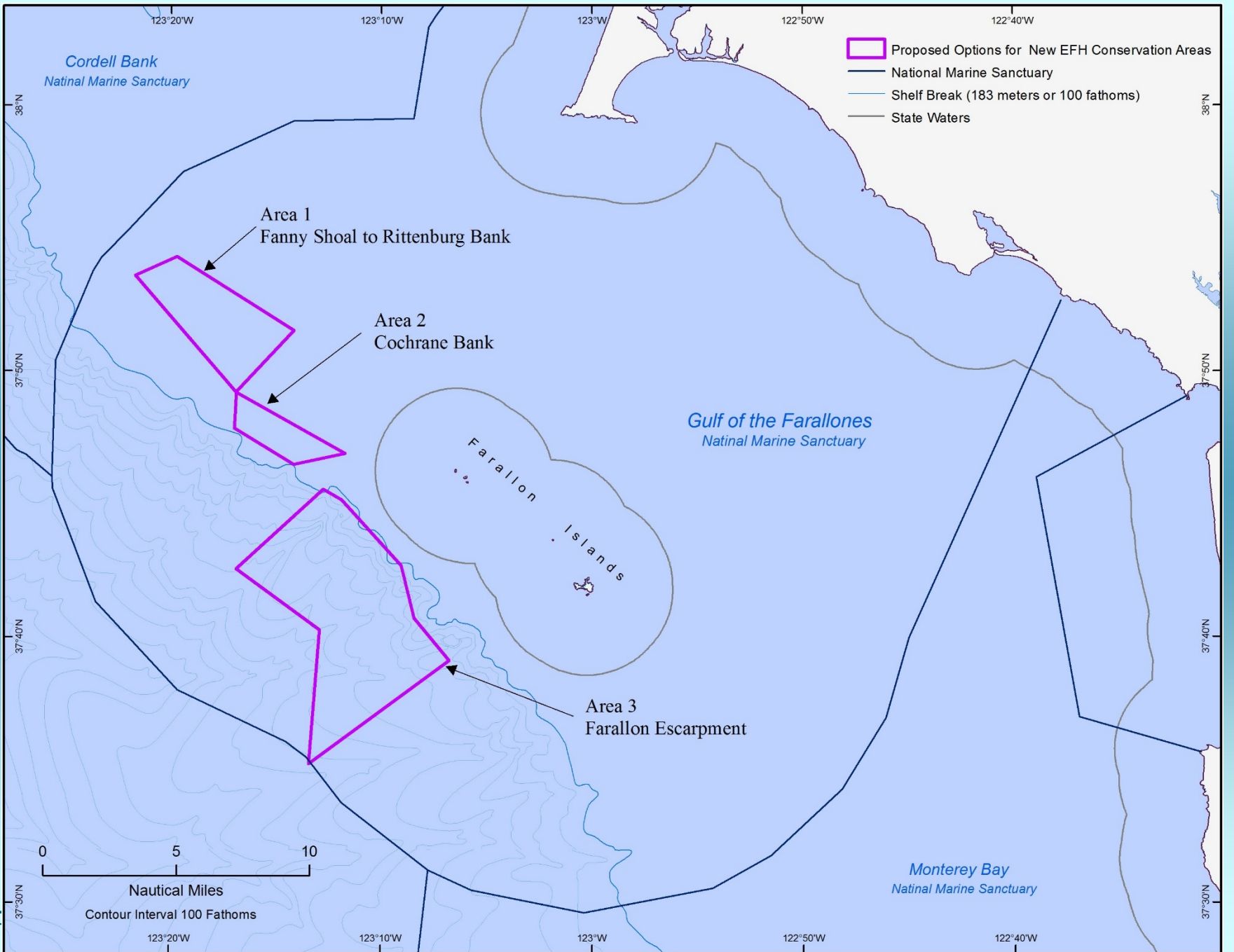
- **The Council is responsible for minimizing adverse effects on EFH to the extent practicable and decided to review EFH protections and accept proposals for changes.**



2013 Proposed Actions

- The sanctuary identified areas based on the 2011 and 2012 surveys of the Farallon Escarpment, Rittenburg Bank and Cochrane Bank and requested EFH Conservation Areas (no trawl areas).





Tick Tock

- The Council “proposal” process freezes, but we continued to collect data in 2014 at “The Football” and we expanded our boundaries.
- In April 2016, a paper is published highlighting additional areas at “The Football”.

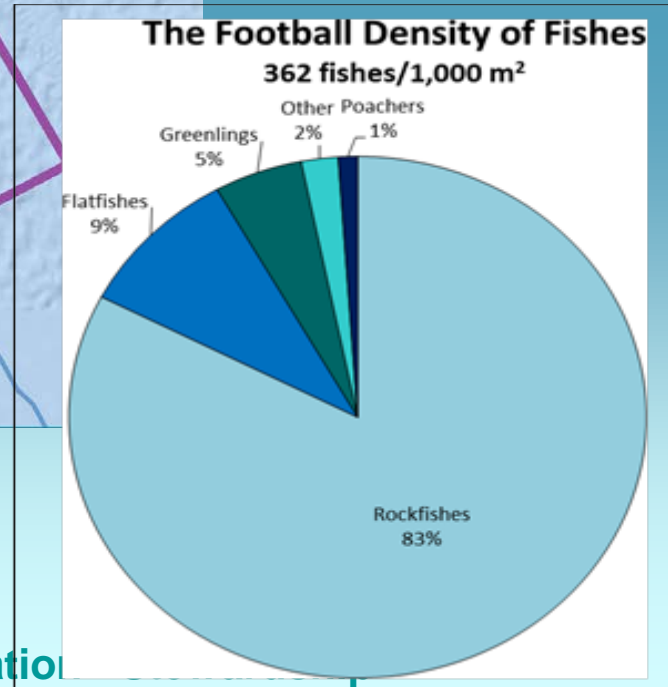
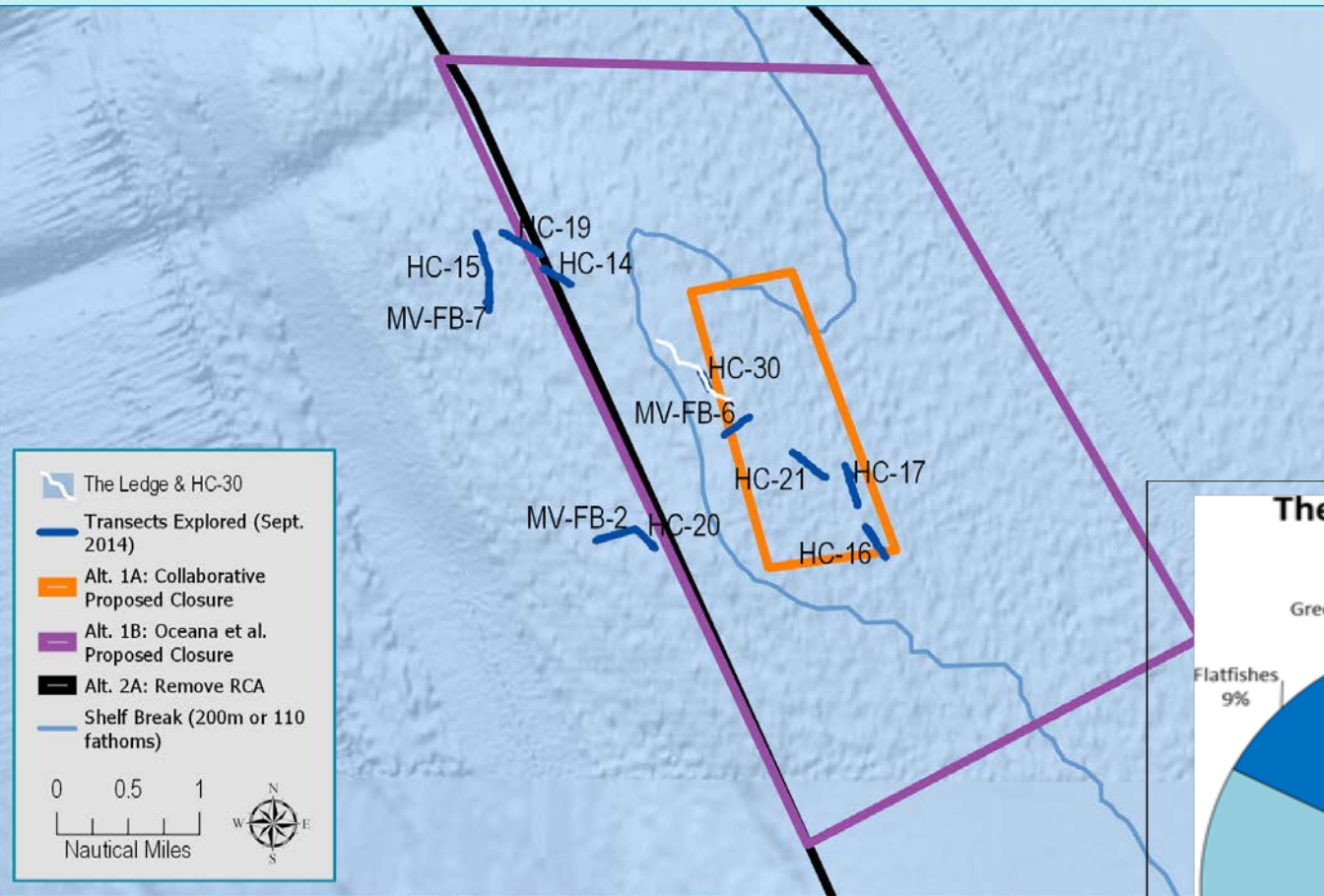


Story Map and Video of The Football

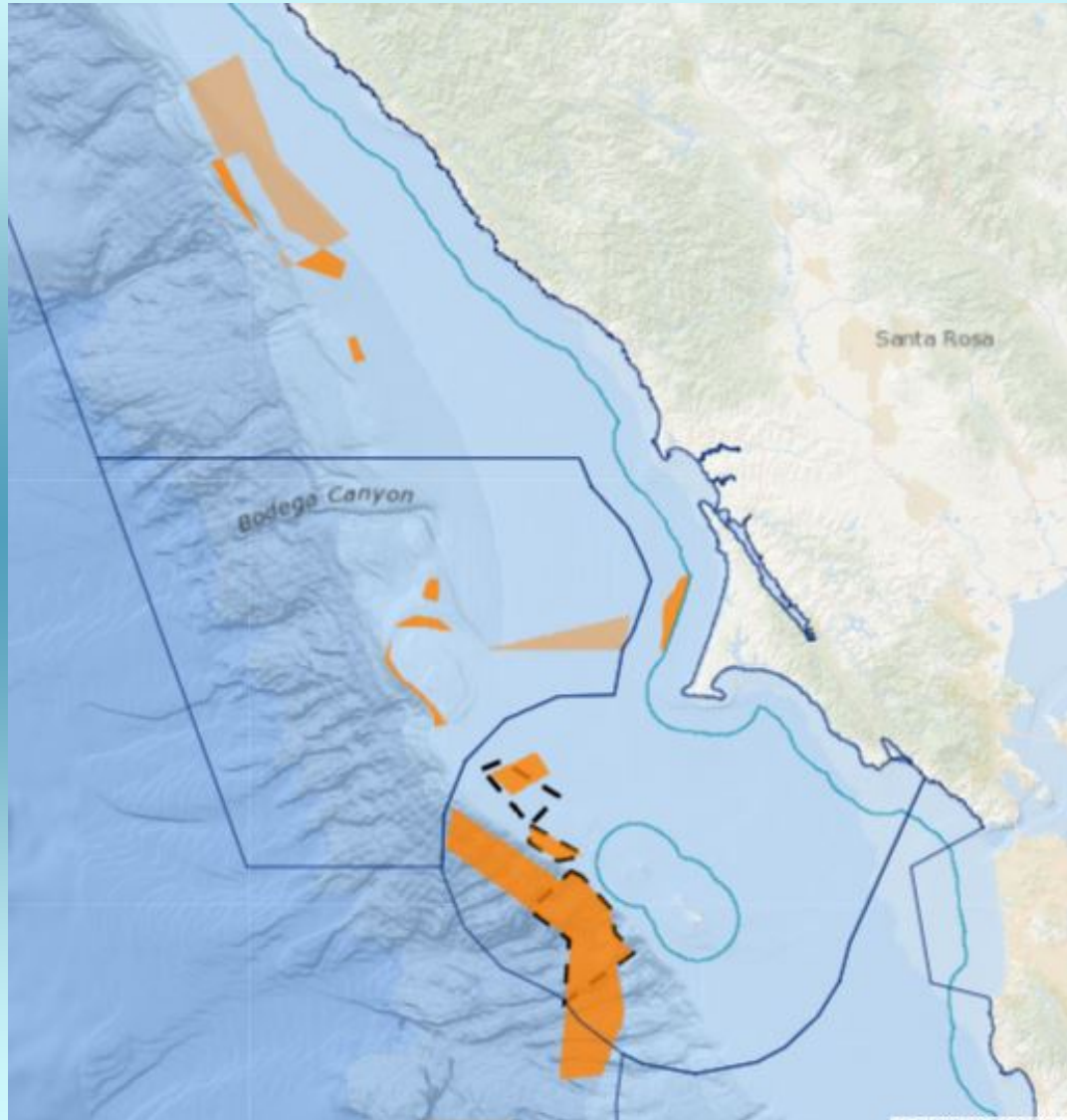


Research • Education • Conservation • Stewardship

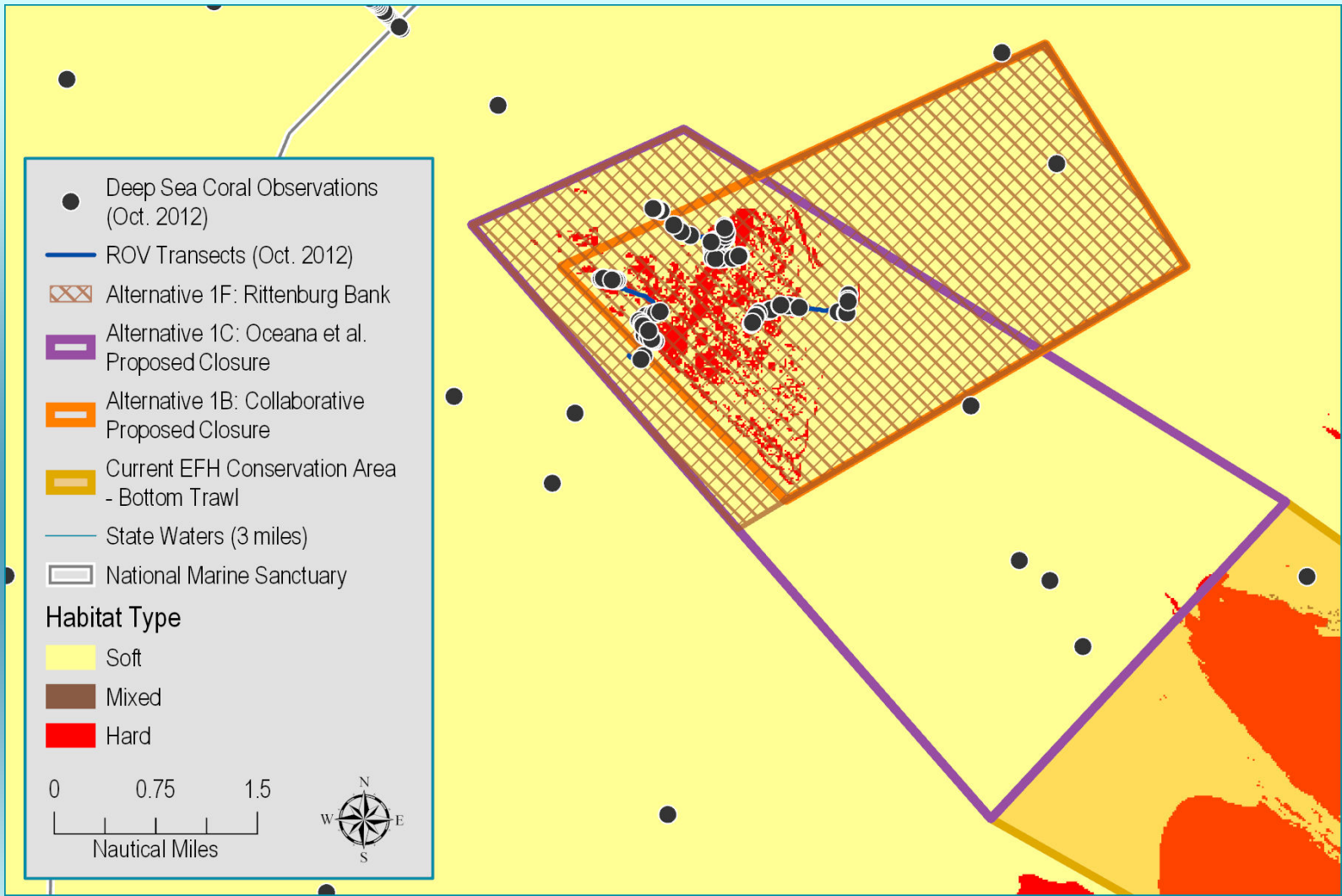
The Football



2015 New Proposal: “The Collaborative”



Research • Education • Conservation • Stewardship



Results: EFH Discussion Tool Demonstration



Research • Education • Conservation • Stewardship

Rittenburg Bank

Area Protected:
12.7 square miles

Depth Range:
~85 m to 115 m (46-63 fathoms)



- It includes an offshore high-relief bank of rocky habitat (Rittenburg Bank) and the highest densities of sponges see to date in the Sanctuary.



Cochrane Bank/West Fanny Shoal

Area Protected:
6.2 square miles

Depth Range:
~95 to 160 m (52-87 fathoms)



- This is the deepest known rocky bank within GFNMS and the northernmost extent of Christmas Tree coral.

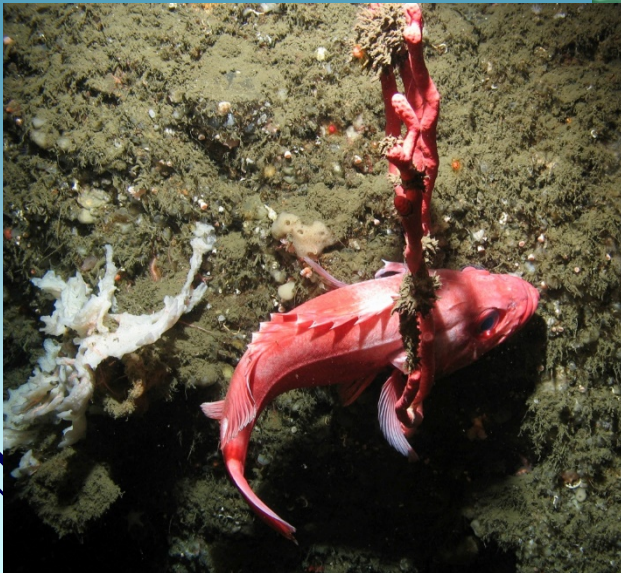
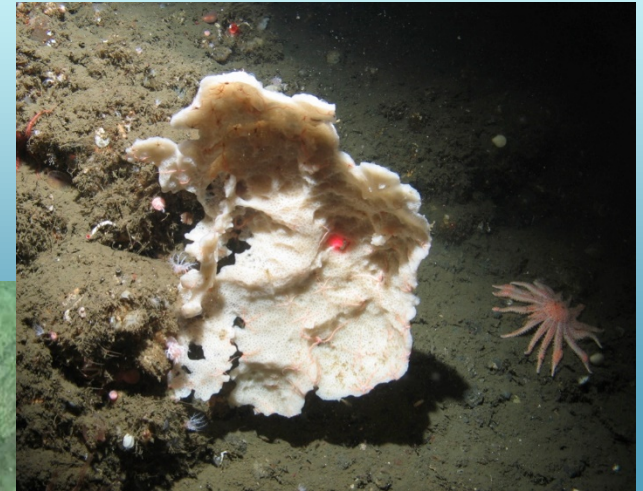
Farallon Escarpment

Area Protected:

126.2 square miles (~105 in sanctuary)

Depth Range:

~182 to 1280 meters
(100-700 fathoms)



Includes canyons, known areas of exposed bedrock on fault scarps and biogenic habitat in an area where groundfish species are known to occur.

Metrics

CBNMS

3 areas were closed totaling 19.06 sq. miles
1 area was reopened equaling 19.55 sq. miles

MBNMS

13 areas were closed totaling 186.55 sq. miles
5 areas were reopened totaling 99.10 sq. miles

GFNMS

7 areas were closed totaling 177.78 sq. miles
2 areas were reopened totaling 94.61 sq. miles



Council Discussion and Action

- Letter of support for the preferred alternative?
- Actions for data-poor areas?



Greg McFall/CBNMS/NOAA-Cordell Bank National Marine Sanctuary
— with Kaitlin Graiff, Michael C. Carver, Lisa Etherington and Jenny Stock.

Research • Education • Conservation • Stewardship

