

Education & Outreach in the Expansion Area





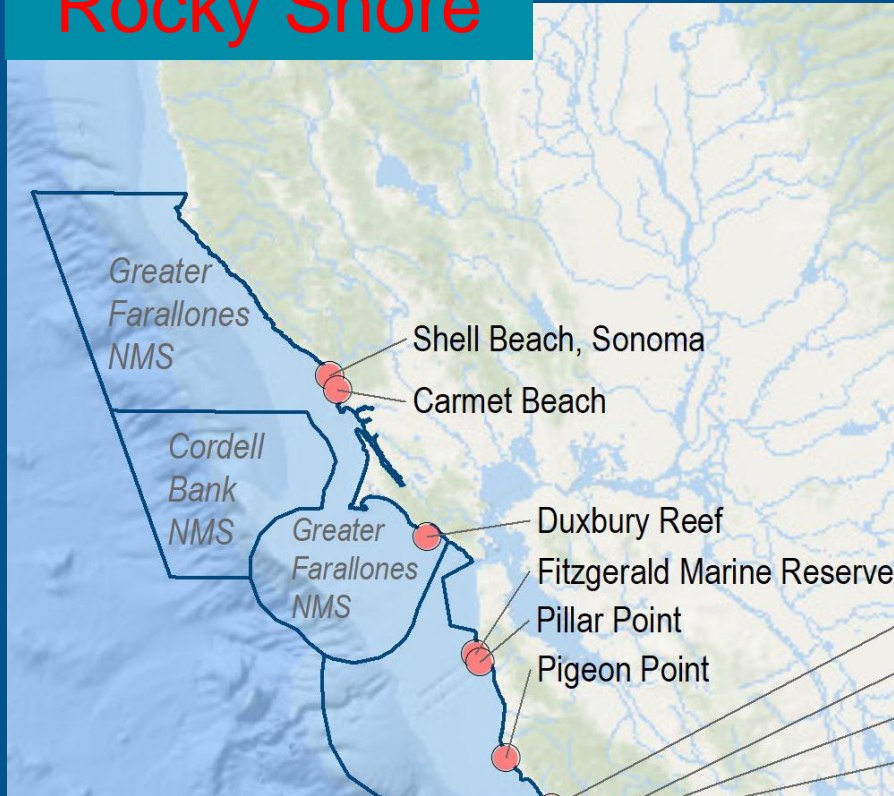
At Your School Blitz's

For the past three years:
7 schools, 903 students, 44 programs

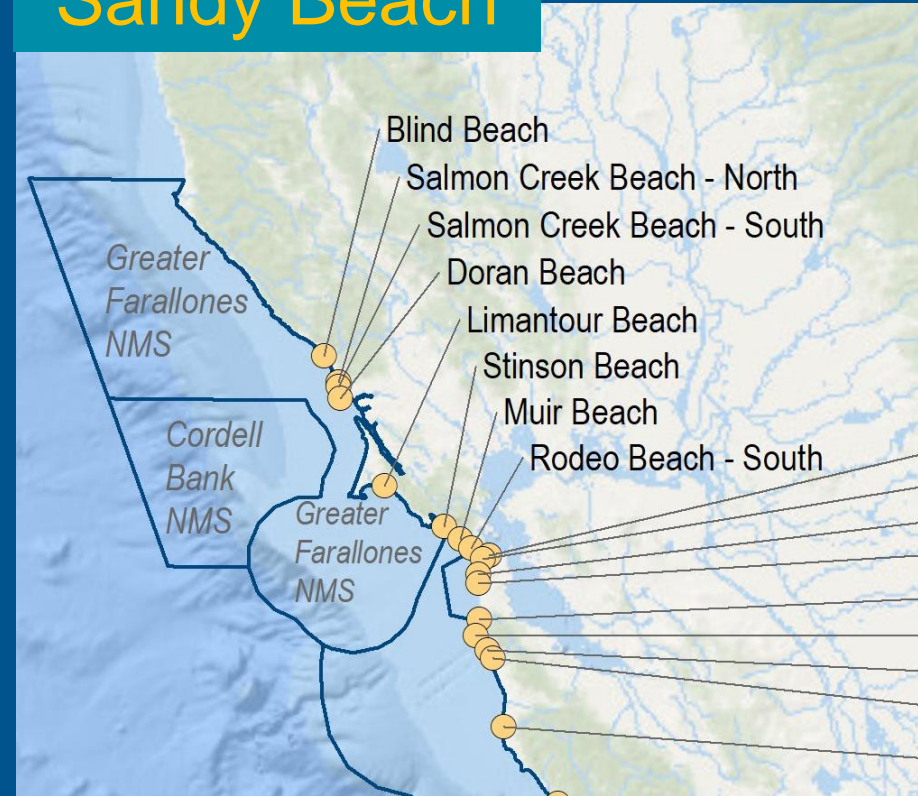


LiMPETS – Five New Monitoring Sites

Rocky Shore

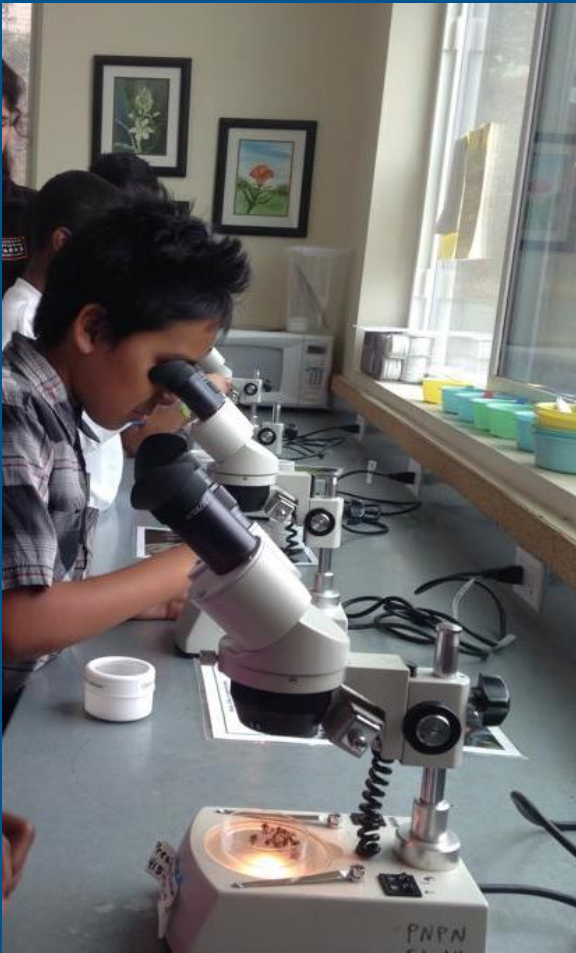


Sandy Beach



xx schools and xx students served

Out of School Youth Programs



2016 & 2017 Action Network Coastal Summer Camps
2018 Youth Exploring Sonoma Coast

Ocean Film Festivals At Point Arena Theater



2016 & 2018

Yearly Sanctuary Explorations



SANCTUARY EXPLORATIONS

Whale & Wildflower Walk



2015, 2016, 2017 & 2018

Whale Trail Interpretive Signs



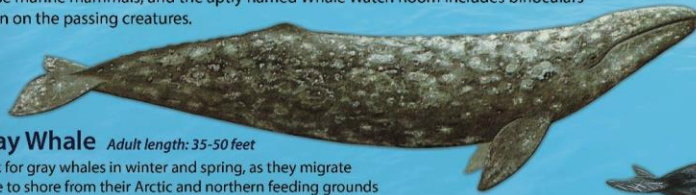
Welcome to The Whale Trail Point Arena Light Station



Watch for Whales

Situated on a peninsula that is the closest point on the continental United States to Hawaii, the Point Arena Light Station offers some of the most dramatic and diverse marine mammal watching on the northern California coast. Whales, seals, sea lions, porpoises and dolphins are frequently spotted from the bluffs of the 23-acre grounds, and it is always exciting to see them from the top of the 115-foot Lighthouse Tower, tallest on the Pacific coast.

The Lighthouse Tour Guides communicate between the Museum and Tower when they sight these marine mammals, and the aptly named Whale Watch Room includes binoculars to zoom in on the passing creatures.



Gray Whale *Adult length: 35-50 feet*

Look for gray whales in winter and spring, as they migrate close to shore from their Arctic and northern feeding grounds to their Mexican and southern California calving areas.



Blue Whale *Adult length: 65-100 feet*

Endangered blue whales, the largest animals ever to have lived on Earth, feed here in summer and fall on huge swarms of krill. Scan the horizon for their tall, slender blows rising to more than 25 feet.



Humpback Whale *Adult length: 45-50 feet*

Commonly seen in summer and fall, humpback whales feast here on shrimplike krill and schools of anchovies and sardines. They are famous for leaping clear of the water and landing with a thunderous splash.



Risso's Dolphin *Adult length: 8.5-13 feet*

Risso's may be seen any time of year in pods ranging from ten to 1,000 animals. These active dolphins are deep divers and mainly hunt at night for squid.



Orca (Killer Whale) *Adult length: 28-32 feet*

Orcas are the largest members of the dolphin family, and work together to catch their prey. Transient orcas hunt marine mammals such as gray whales and seals. Less commonly seen, endangered resident orcas search for salmon along this coast.



California Sea Lion *Adult length: 6-7.5 feet*

Noisy sea lions pack onto rocks or rest together in the water in "rafts." Sleek and fast, they hunt offshore for fishes and squid.



Harbor Seal *Adult length: 5-6 feet*

Shy and curious, harbor seals rest on offshore rocks and often watch people on the shore. In spring, they congregate on protected beaches to give birth and nurse their young.



Spynopping

Breaching

Fluking

Blowing

ILLUSTRATIONS BY JESSICA L. COOPER. PHOTOGRAPHS BY JESSICA L. COOPER. PHOTOGRAPHS BY JESSICA L. COOPER. PHOTOGRAPHS BY JESSICA L. COOPER. PHOTOGRAPHS BY JESSICA L. COOPER.



Report your whale sightings using the Whale Alert app



Discover The Coast Annual Event



NATIONAL CONSERVATION LANDS


Discover the Coast

California Coastal National Monument
Point Arena-Stornetta Unit



**Saturday
August 6th, 2016
@ Point Arena-Stornetta Unit**

Artwork by
Ellen Whitley



NATIONAL CONSERVATION LANDS

Discover the Coast

California Coastal National Monument
Point Arena-Stornetta Unit

**Saturday
June 9
2018
@ Point Arena-Stornetta**







Photo by Michael Beattie

Partners

FRIENDS OF POINT ARENA-STORNETTA LANDS

Discover Our Lands Event Map

Saturday, June 3, 2017, 10 am to 4 pm featuring
Point Arena-Stornetta Unit of the California Coastal National Monument,
Point Arena Lighthouse and the Mendocino College Coastal Field Station



Point Arena Lighthouse
Guided Walks
Whale & Bird Watch Station
Marine Debris Workshop
Food: Clam Chowder
Strawberry Shortcake
Free entry, \$5 Tower Tour
Museum & Gift Store

Schedule of Activities
10:00 Lighthouse Gates Open
10 to 11:30 Geology from the Tower
10:30 to 11:30 Guided Walks:
Cultural Awareness with Isaac Rios
Birds with Rich Trissel
Native Plants with Julia Larke
11:45 to 1:00 Birds from the tower
noon to 1:00 Guided Walks:
Geology with Tom Cochrane
Cultural Awareness with Isaac Rios
Nature with Jeanne Jackson & Laura Baker
1:15 to 3:00 Geology from the Tower
1:30 to 2:30 Guided Walks:
Birds with Rich Trissel
Native Plants with Nancy Morin
2:45 to 4:00 Birds from the Tower
3:00 to 4:00 Guided Walks:
Geology with Tom Cochrane
Native Plants with Nancy Morin

All Day:
Whale & Bird Watch Station
- Doug Forsell & Jamie Hall
Marine Debris Workshop:
Talking Trash, Taking Action
- Cea Higgins
Activities for Kids
- Action Network
Clam Chowder
- Pier Chowder House
Strawberry Shortcake & Brownies
- Lighthouse Keepers

Guided Walks Meet in Front of the Gift Store and Explore the Station Grounds and Public Lands to the North

Point Arena City Hall
Trail to College Field Station (2.3 miles)

Mendocino College Coastal Field Station
Open House 10 to 2pm
Hear from science faculty about educational and research programs in coastal biology and geology.

Trail to College Field Station (1.2 miles)

Trail to College Field Station (.7 miles)

2016, 2017 & 2018

Point Arena Lighthouse Lecture Series



Point Arena Lighthouse Lecture Series Presents.....



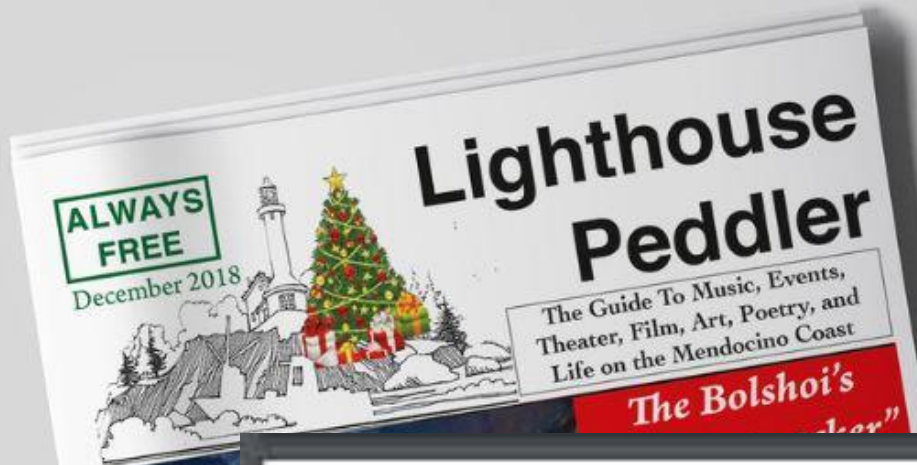
Exploring Tidepools: Life at the Edge of the Sea

Come learn about the colorful anemones, sea stars, jewel-like sea urchins, elegant sea slugs, chitons, octopus and other creatures that call the rocky intertidal areas of the Mendocino coast home.

Through beautiful imagery and marine life artifacts, Carol Preston, Education and Outreach Coordinator, NOAA's Greater Farallones National Marine Sanctuary, will present new research, and discuss how algae and marine invertebrates compete for food, evade predators, and adapt to sometimes brutal and ever-changing sea conditions to survive.

**Saturday, May 14, 4:00 p.m. in the Point Arena Lighthouse Fog Signal Building,
45500 Lighthouse Road. Admission, \$5.00. Space is limited; for reservations or
more information call 707-882-2809.**

Community Publications



"Getting To the Bottom Of Things: the Dungeness Crab"

By Mary Jane Schuman

They met last spring. Perhaps it was the heady perfume of pinesaprows wafting through the salt-traged water. He sensed she would be receptive, vulnerable, but in a positive way. No longer imprisoned in her hard, shell-like carapace, and teeming with eggs - between 100,000 and 2 million of them - she accepted his courtship. They'd spend the next several days together, dining

substantially provides a storage for umbilical and connective tissue proteins, plus various-laden waters that support a proliferation of marine life throughout the food web. These bottom dwellers have it all here. For more general information on Dungeness crabs, see NOAA Fisheries article at <https://www.noaa.gov/all/42>.

DELICIOUS: This species is prized for its sweet meat (best served, in this article's opinion, with a quick dip in clarified butter and fresh cornmeal bread). In Northern California and the Pacific Northwest, Dungeness are a traditional Thanksgiving specialty, and enjoyed throughout the remaining season as well.

THE HARVEST: Dungeness have been landed commercially since Gold Rush days. The fishery is regulated based on crab size, sex, and season. Each fall, the

climate change damage. Nink Oppenheimer of the Pacific Coast Federation of Fishermen's Associations said the "new normal" of dealing with storms and sea level rise is one of the main reasons his organization filed the suit. "These companies denied the truth about the impacts climate change will have about oceans, society and commercial crab fisheries." For more on how ocean acidification is affecting Dungeness crabs, see <https://www.noaa.gov/all/42>.

WHALE IMPACTS: Unfortunately, the Dungeness crab and other fisheries pose a serious threat to whales that become entangled in crab pot lines, traps, and other gear. NOAA, other agencies, scientists, and the fishing community are working together to find solutions, such as modifying fishing gear, to minimize these sometimes fatal



Visit Us Story Map



Six destination sites in Expansion area featured

Office of National Marine Sanctuaries
National Oceanic and Atmospheric Administration



NATIONAL MARINE
SANCTUARIES

GREATER FARALLONES

<http://farallones.noaa.gov/>