



***Maritime Heritage Program Priorities
at the
Greater Farallones
National Marine Sanctuary***

**GFNMS Advisory Council Meeting
San Francisco, CA**

Dec 2, 2015

Maritime Heritage Program



- National Maritime Heritage Program (MHP)
- Led by Jim Delgado (Silver Spring, MD HQ) and Robert Schwemmer (West Coast, CINMS)
- Very few sites have MHP staff
- Focus “Cultural Landscape Initiative” on West Coast sites, in particular, Greater Farallones sanctuary and the newly expanded region
- Collaborate with sanctuaries, federal and state agencies, and private sector
- Document resources and create opportunities to locate and record submerged archaeological resources.
- These studies provide a foundation for an inventory and enhanced public awareness about the historic resources located in the sanctuary.

2016 Priorities at Greater Farallones



- Survey Dog Hole Ports
- Survey Shipwreck *Dorothy Wintermote*
- Engage Tribes
- Expand our Greater Farallones website

Dog Hole Port Survey



- Name given to small ports on the Pacific Coast between Central California and Southern Oregon
- mid-1800s until 1939
- Called dog-holes because the schooners that served them would have to be able to "turn around in a harbor barely small enough for a dog". - Wikipedia
- Survey historic moorings and other artifacts on the sea floor, as well as the terrestrial sites of the historic chute landings
- R/V *Fulmar* - remotely operated vehicle (ROV) and SCUBA divers will be used to collect high definition video footage, still images & data for analysis.
- Partnership with California State Parks

GREATER FARALLONES & CORDELL BANK NATIONAL MARINE SANCTUARIES

HISTORIC SHIPWRECKS AND DOG HOLE LUMBER PORTS

KEY

SHIPWRECKS - BIG DATE OF LOSS (LISTED ALPHABETICALLY)

DOG HOLE PORTS - LOADING CHUTES

DOG HOLE PORTS "REDWOOD COAST"

PLACE NAMES 1850

SAUNDERS LANDING	104 MILES
STEVEN'S LANDING	102 MILES
NEP ANDY TUCK LANDING	101 MILES
COLLINS LANDING	100 MILES
FAVOR'S LANDING	91 MILES
FISH ROCK LANDING	88 MILES
DOCK'S LANDING	87 MILES
WALALA LANDING	86 MILES

DISTANCES SOUTH TO SAN FRANCISCO

PLACE NAME VARIATIONS

HEARN'S LANDING	HARDY CRATCH, SIGNAL POINT
BRADLEY'S LANDING	BRADLEY'S LANDING, PETER'S, PHELPS'S
ST. DRESS LANDING	FERGUSON'S COVER, HESEN'S LANDING, BOUGH AND READY LANDING
ANCHOR BAR	HAYDEN'S ANCHORAGE, HAYDEN'S NECK
FAVOR'S LANDING	
CHUMALA	ROBINSON'S LANDING, BIRTHEFORD'S LANDING



COLLINS LANDING

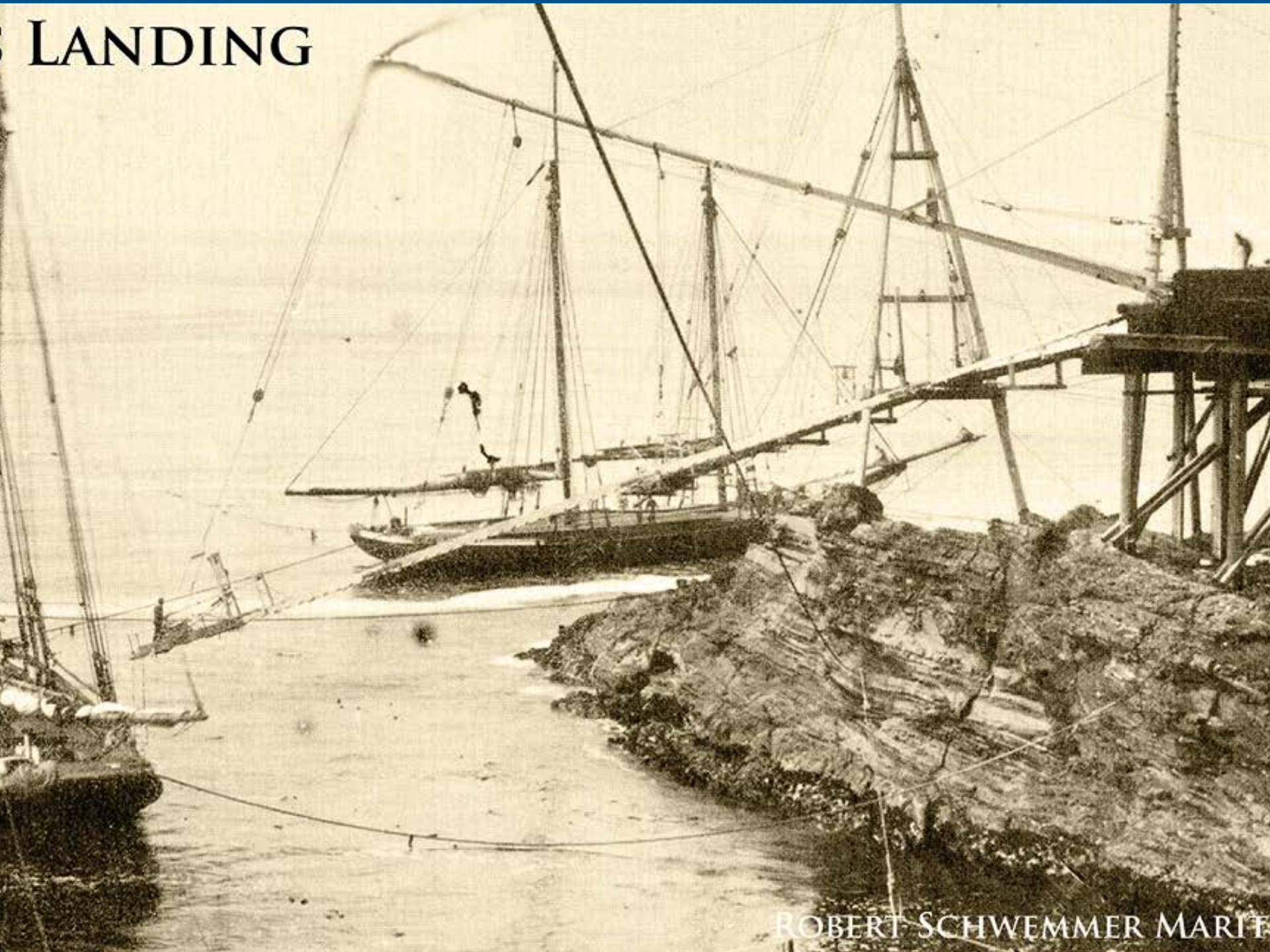


SAN FRANCISCO MARITIME NATIONAL HISTORICAL PARK

NG

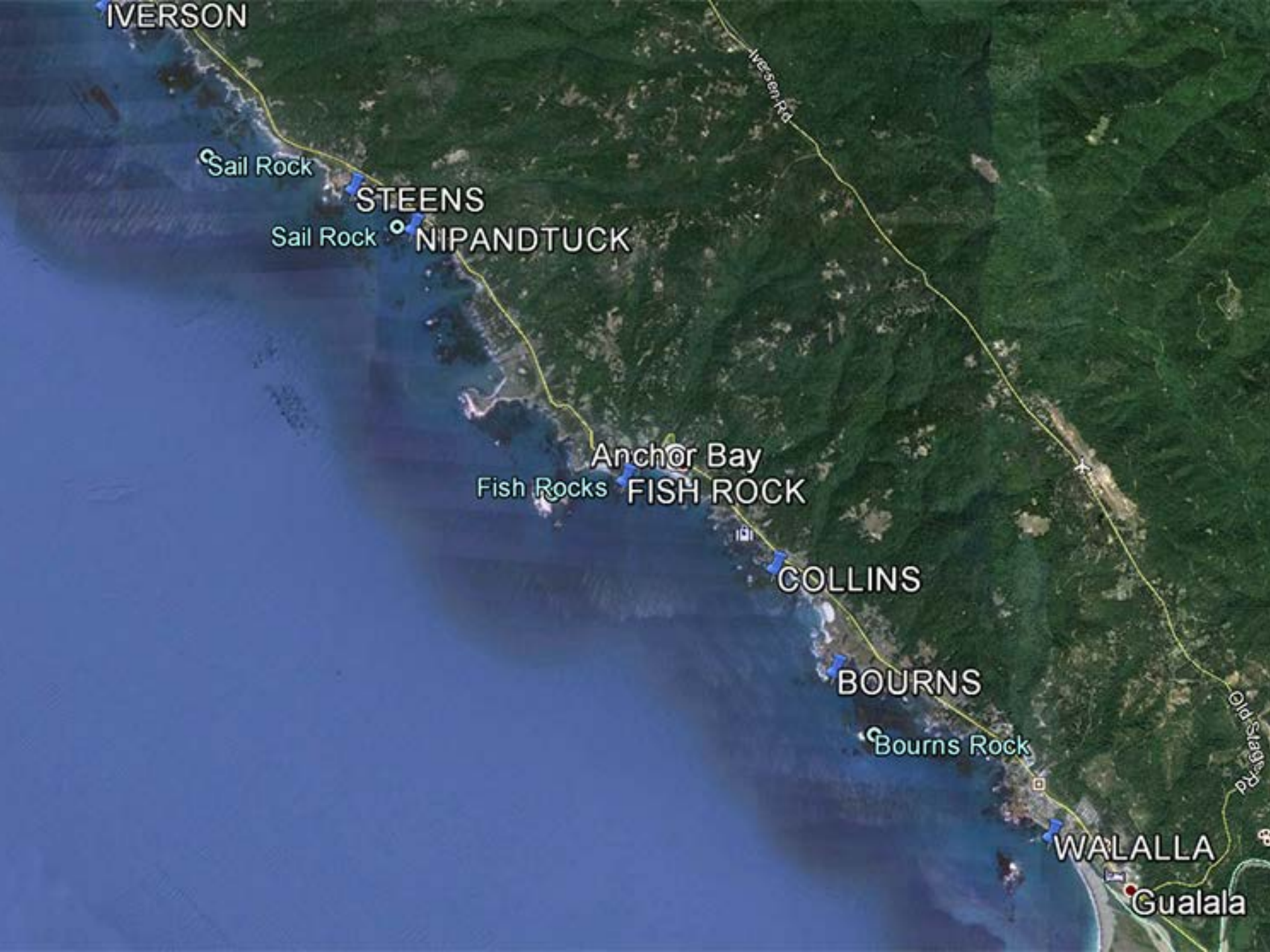


SAN FRANCISCO MARITIME NATIONAL HISTORICAL PARK



LANDING

ROBERT SCHWEMMER MARIT



IVERSON

Sail Rock

STEENS

Sail Rock

NIPANDTUCK

Anchor Bay

Fish Rocks

FISH ROCK

COLLINS

BOURNS

Bourns Rock

WALALLA

Gualala

Iwersen Rd

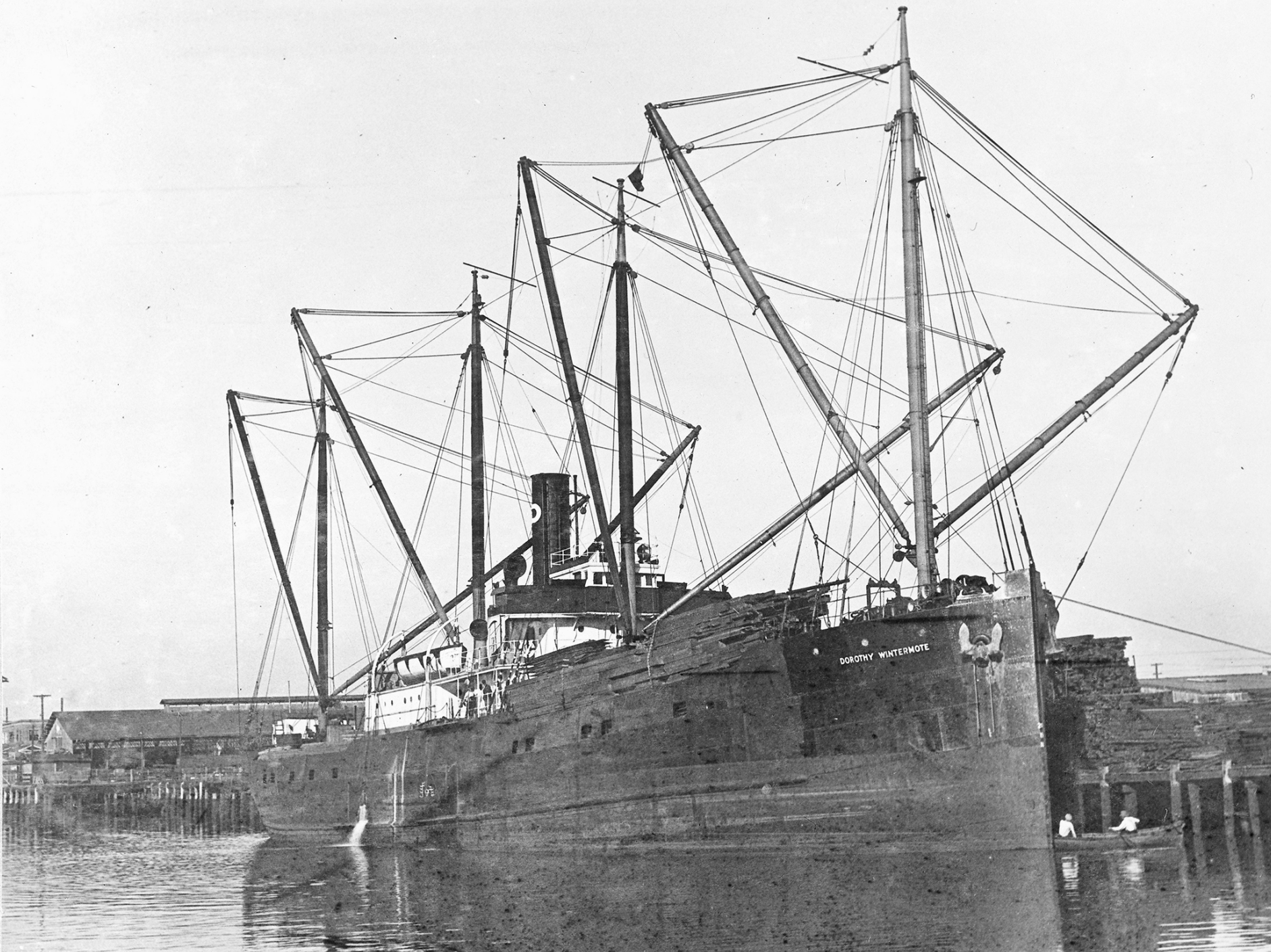
Old Stage Rd

Shipwreck *Dorothy Wintermote*

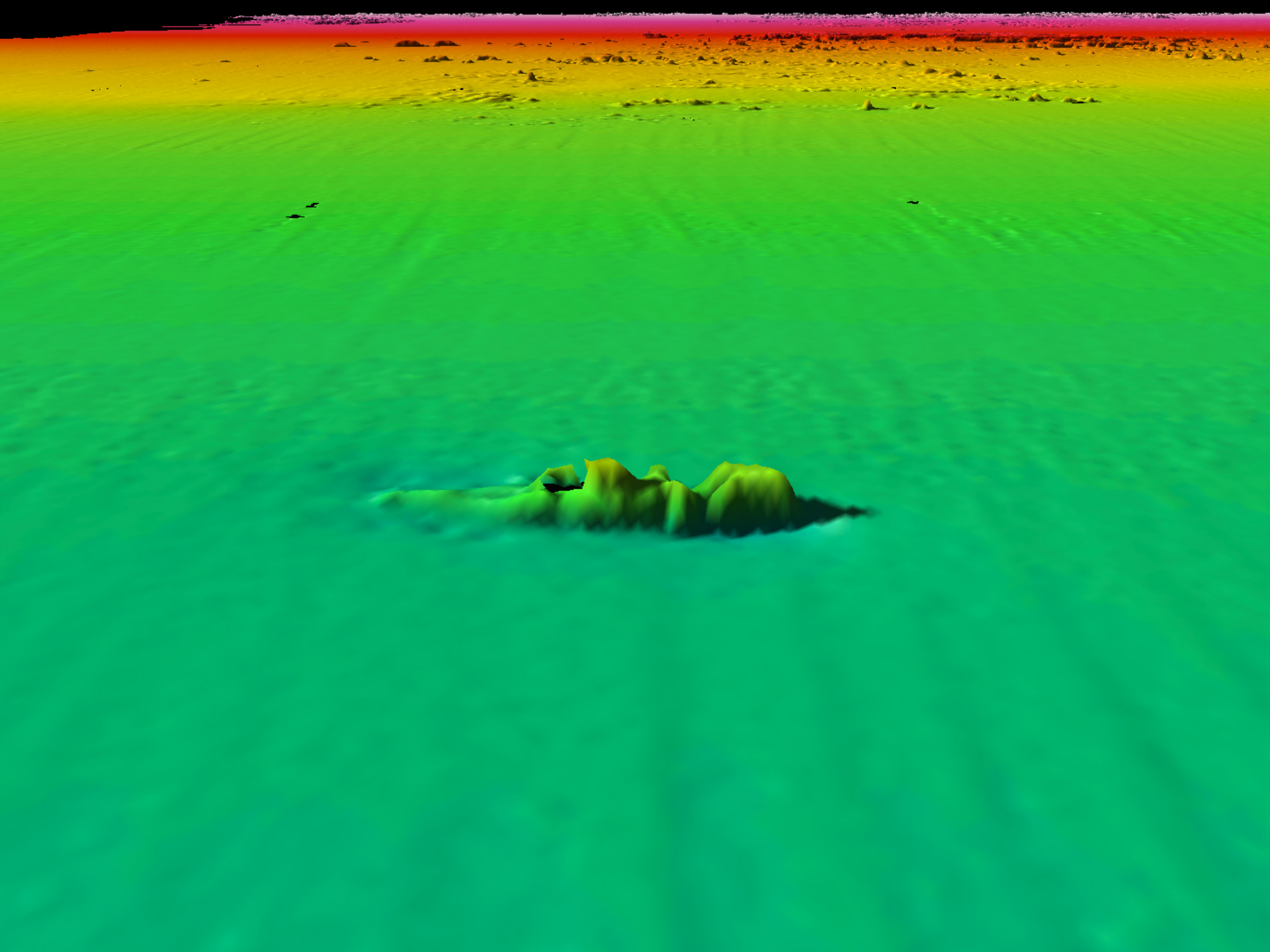


- Coastal Steam Freighter, 252 feet, 29 crew, carried lumber
- Ran aground near Pt. Arena on Sep 16, 1938
- Sank 4-days later on Sep 20, 1938
- No one injured
- Multibeam data; 240' depth
- R/V FULMAR, hopefully using CBNMS ROV when the new camera feed is installed.
- Engage local reporters; it could a nice local interest story, not unlike *Ituna*...





DOROTHY WINTERMOTE



Tribes



- 3 federally recognized tribes:
 - Kashia Band of Pomo Indians
 - Manchester Band of Pomo Indians
 - Federated Indians of Graton Rancheria (Coast Miwok & Southern Pomo)
- 2 participated in expansion celebration event
- Working with tribes to certify existing activities in expansion area
- Continue dialog and build ongoing relationship





GREATER FARALLONES

We protect the wildlife and habitats of one of the most diverse and bountiful marine environments in the world, an area of 3,295 square miles off the northern and central California coast. The waters within Greater Farallones National Marine Sanctuary are part of a nationally significant marine ecosystem. Encompassing a diversity of highly productive marine habitats, the sanctuary supports an abundance of life, including many threatened or endangered species.

- Add Maritime Heritage section, with pages for each shipwreck survey
- Add pages for tribes
- Regular Facebook posts, similar to Marine Life Monday



Brian Johnson
Deputy Superintendent
Acting MHP Coordinator &
Tribal Liaison

(415) 561-6622 x236
brian.johnson@noaa.gov