

Reducing Ship Strikes to Whales

Gulf of the Farallones National Marine Sanctuary
Advisory Council Meeting

Bodega Bay, CA

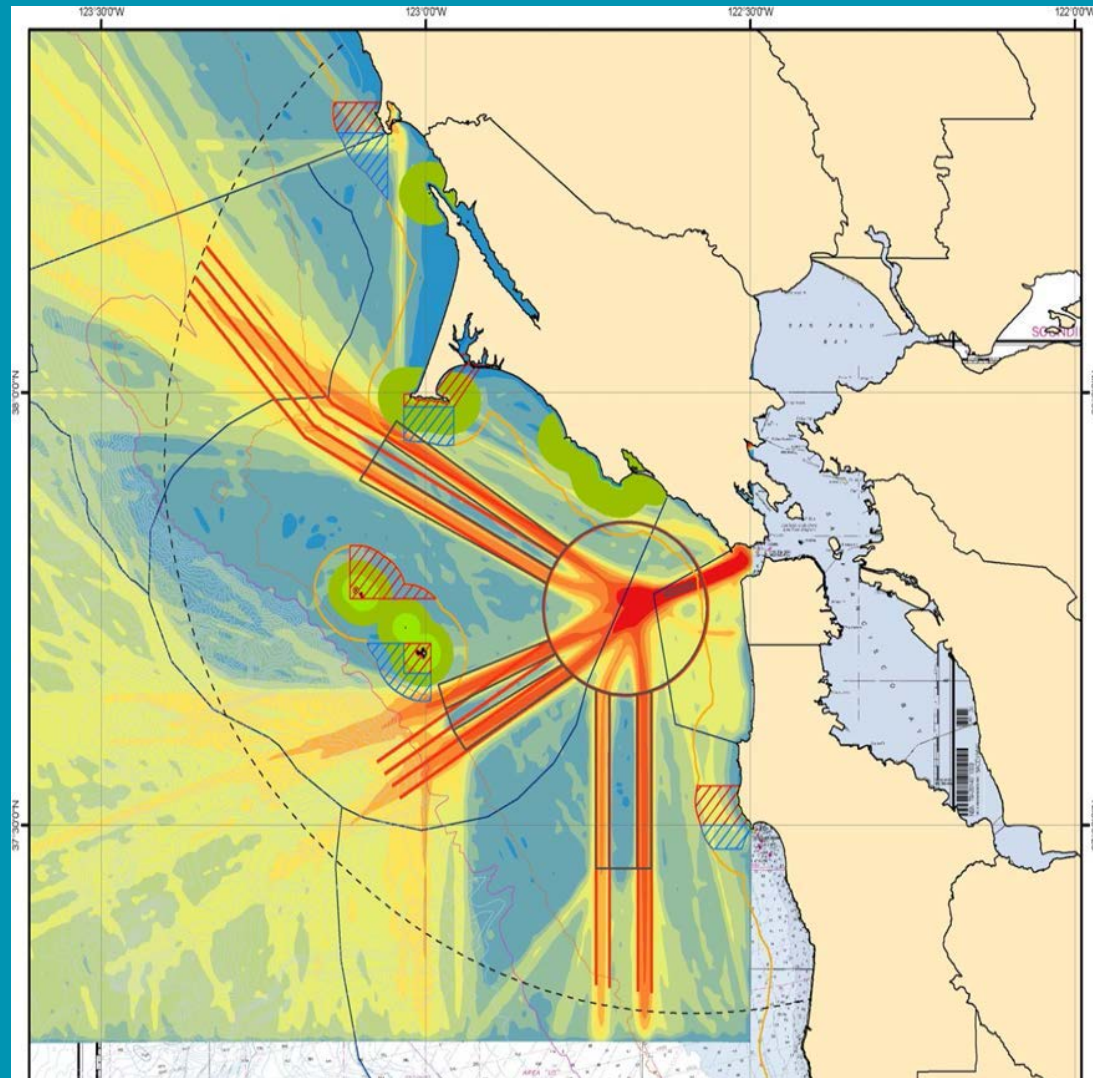
May 20, 2015



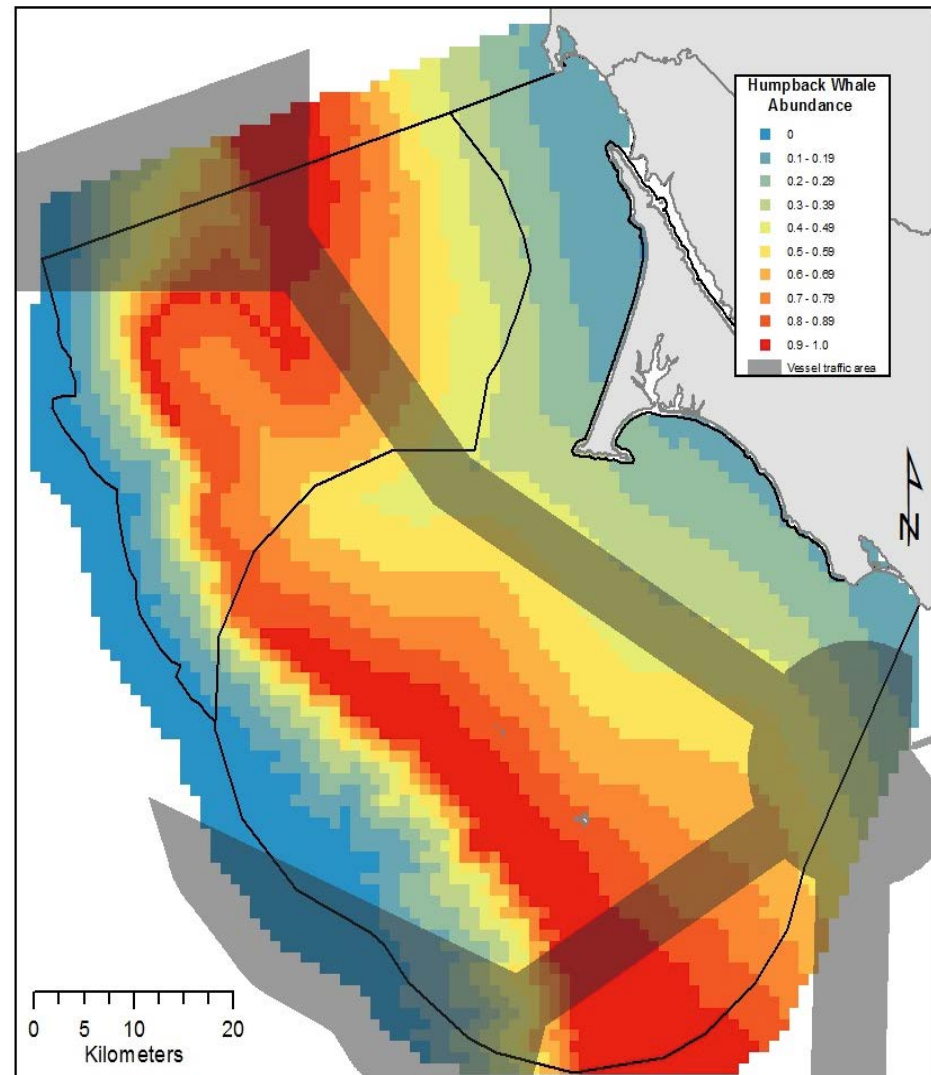
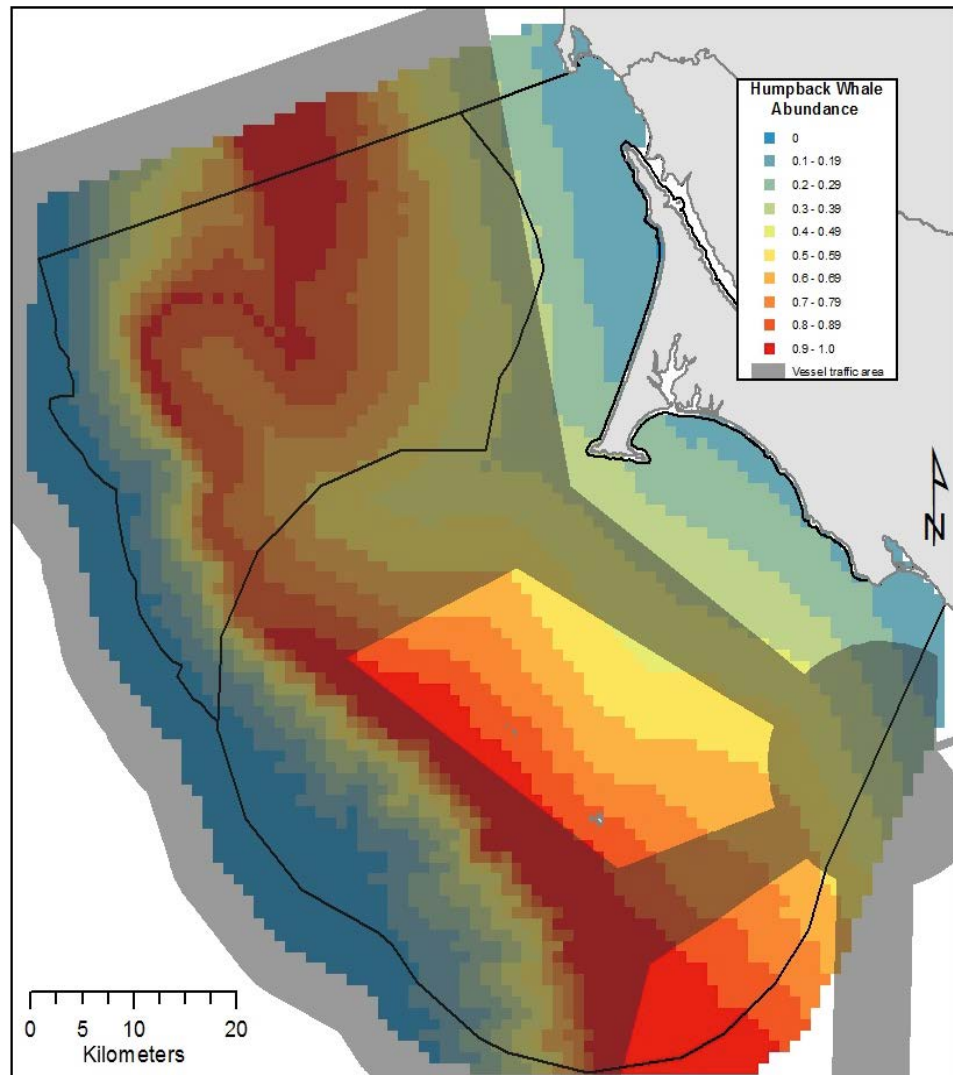
Management Recommendation #1

Modification to the shipping lanes:

“NOAA and USCG should pursue the modification of shipping lanes to avoid areas of whale concentration, such as extension of the proposed western approach lane beyond the continental shelf edge.”



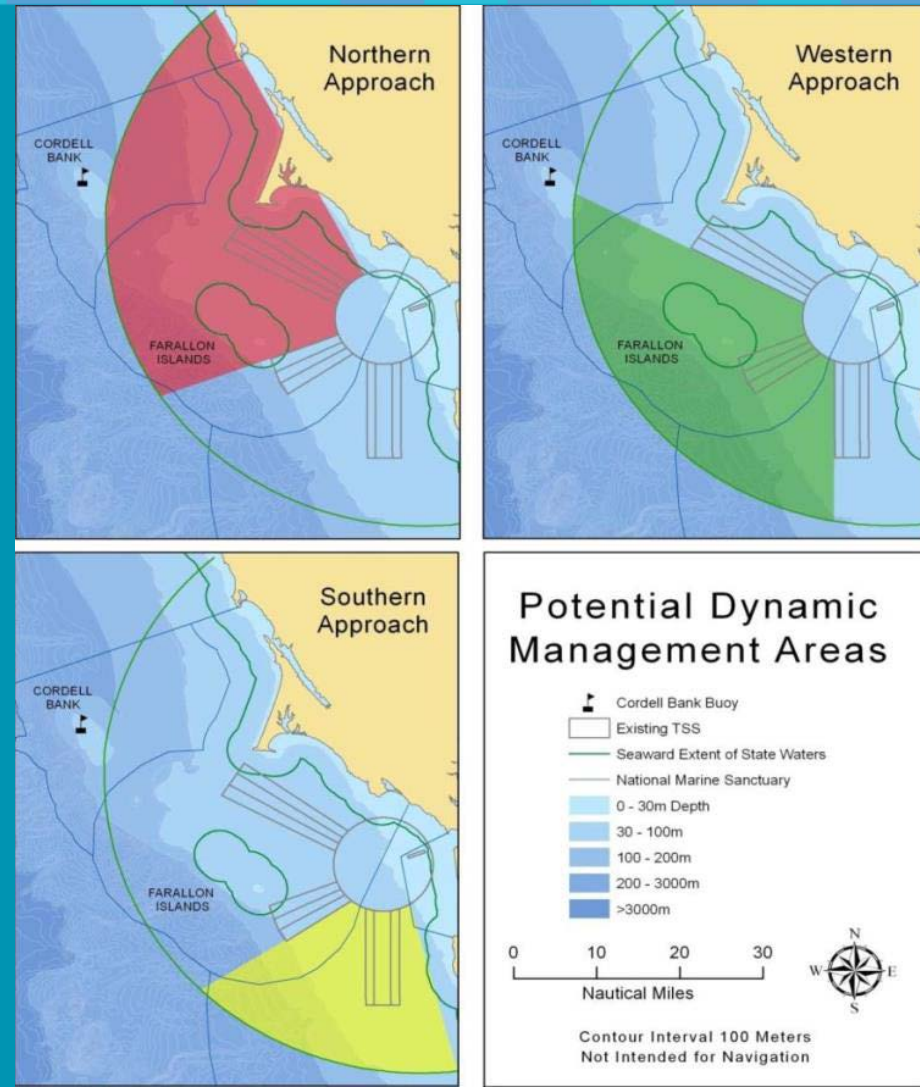
Management Recommendation #1



Management Recommendation #2

Dynamic Management Areas:

"The sanctuaries and NOAA's National Marine Fisheries Service (NMFS), working with external partners, should establish dynamic management areas (DMAs) at the entrance to San Francisco Bay. DMAs should be implemented in areas with high whale concentrations for at least one week or longer as the whale spatial and temporal distribution warrants. The implementation response should be that vessels slow down within the DMA, or preferably, choose alternate lanes where there would be no active DMA."



Management Recommendation #3

Real-time whale sighting and monitoring network:

The sanctuaries and NMFS, working with external partners, should implement a real-time whale sighting and monitoring network with participation from commercial ships, to provide data on whale occurrence and inform the designation of the onset, duration and location of DMAs.

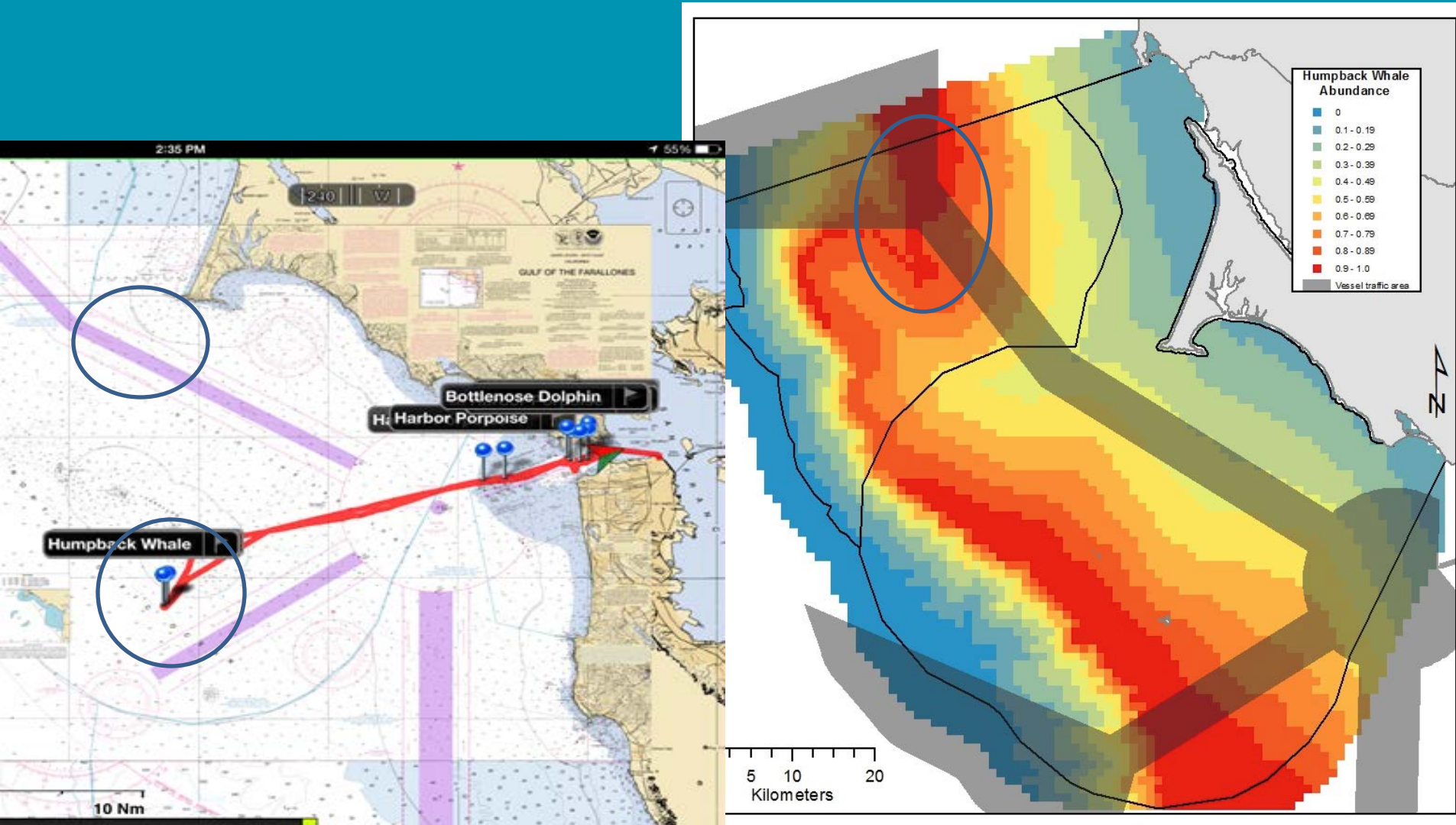


Sanctuary Goal

Goal: Reduce vessel strikes and the lethality of strikes to threatened and endangered whales in the marine sanctuaries



Management Recommendation #3



2015 Sanctuary Actions

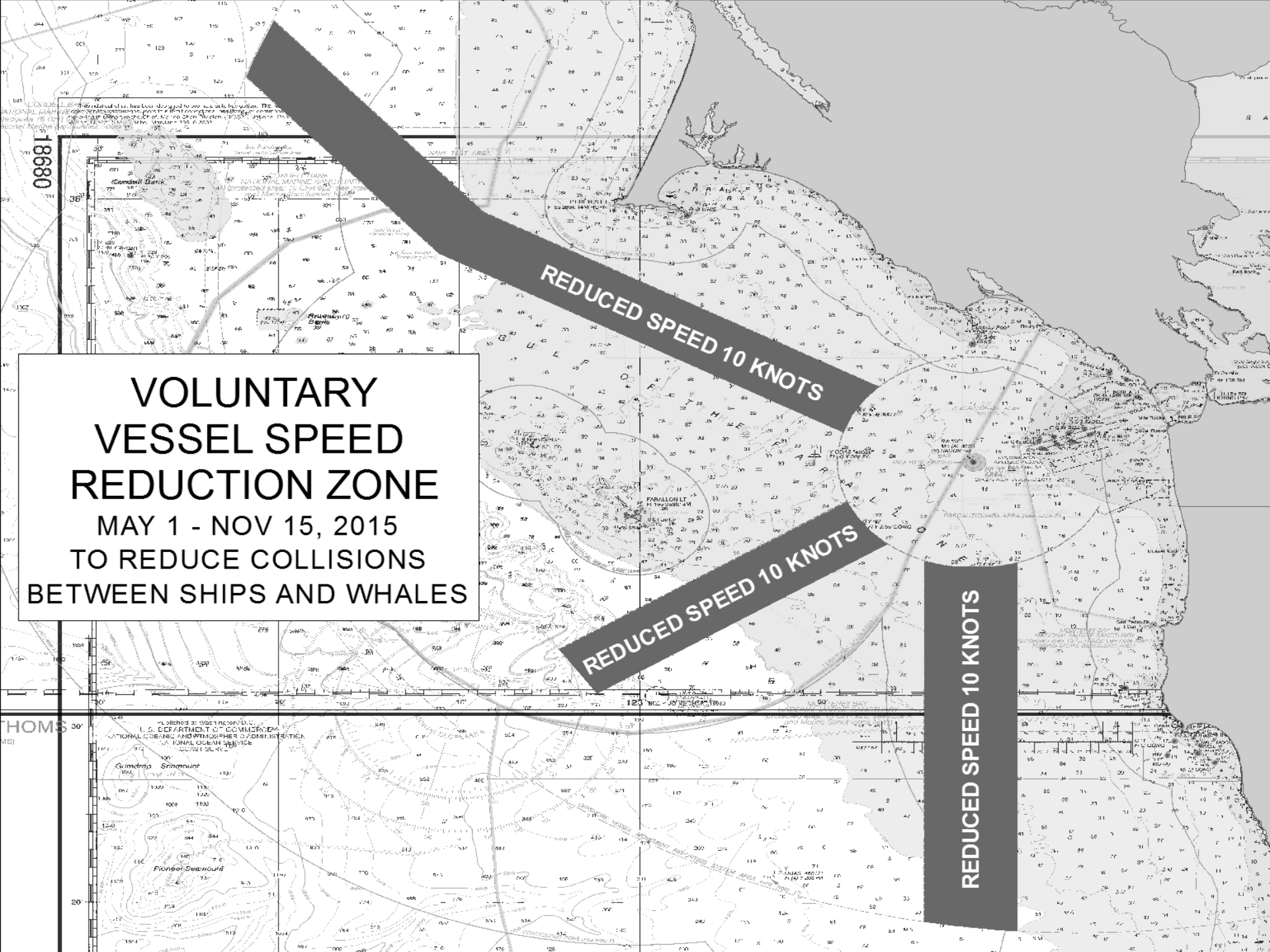
Broadcast LNM: NOAA Sanctuaries request a voluntary Vessel Speed Reduction from May 1-November 15 within the SF TSS. Vessels 300 gross registered tons or larger transiting the Off San Francisco Traffic Separation Scheme are encouraged to transit at speeds not in excess of 10 knots. These areas contain concentrations of endangered blue, humpback and fin whales that are protected under the federal Endangered Species Act, the Marine Mammal Protection Act, and the National Marine Sanctuaries Act. Please report any collisions with whales or any observed injured or dead whales to NOAA at 877-SOS-WHALE (877-767-9425) or to the U.S. Coast Guard on Channel 16. Please report sightings of whales to whales@noaa.gov

**VOLUNTARY
VESSEL SPEED
REDUCTION ZONE
MAY 1 - NOV 15, 2015
TO REDUCE COLLISIONS
BETWEEN SHIPS AND WHALES**

REDUCED SPEED 10 KNOTS

REDUCED SPEED 10 KNOTS

REDUCED SPEED 10 KNOTS



Next Steps

- Issued Notice to Mariners
- Educate Shipping Companies about the need to slow down when whales are present
- Continue to monitor for the presence and location of whales
- Document and assess the shipping industries cooperation with the voluntary speed reduction
- If necessary pursue mandatory speed reduction in sanctuary